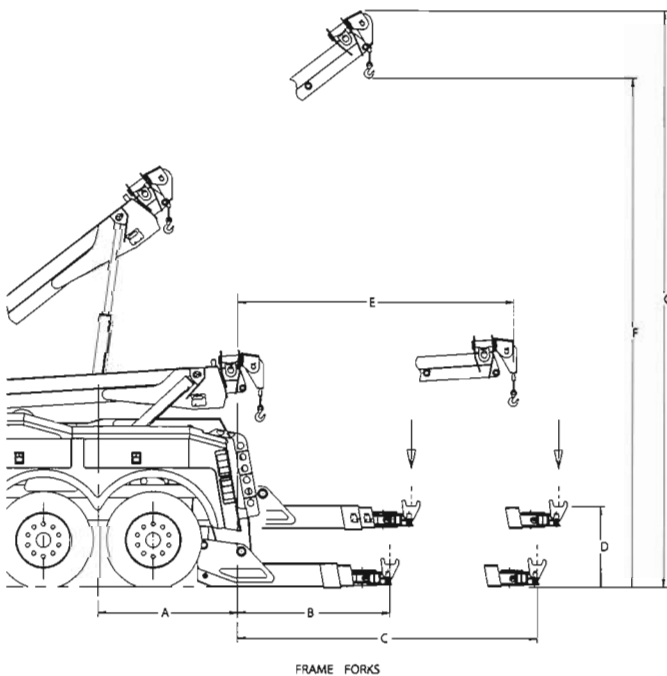


TAKING THE INDUSTRY TO NEW LENGTHS

THE HDL NOW HAS THE LONGEST UNDERLIFT REACH IN ITS CLASS.



HDL 700/480 35 TON INDEPENDENT

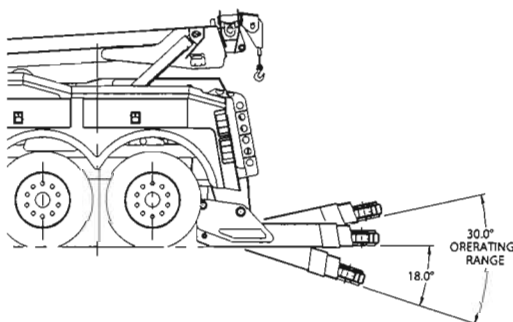
Specifications:

	Distance	Rating
A. Centerline of Rear Tandem to Rear of Tailboard	66"	
B. Reach with Forks, retracted (rear of tailboard to centerline of forks)	72"	48,000 lbs
Reach with Forks, retracted with Optional Coach Underlift (rear of tailboard to centerline of forks)	87"	48,000 lbs
C. Reach with Forks, extended (rear of tailboard to centerline of forks)	142"	17,000 lbs
Reach with Forks, retracted with Optional Coach Underlift (rear of tailboard to centerline of forks)	181"	17,600 lbs
D. Maximum Horizontal Towing Height with Fork	38"	
Maximum Horizontal Towing Height with Fork with Optional Coach Underlift	38"	
E. Boom Reach off Rear of Tailboard (boom @ 3.5°)	131"	
F. Boom Working Height to Hook (boom @ 38°)	241"	
G. Maximum Boom Height (boom @ 38°)	273"	

Boom Lift Ratings (SAE J2512)

Boom Retracted @ 30°	70,000 lbs
Boom Extended @ 30°	22,000 lbs

Note: All values are based on a 42" truck frame height and rounded to the nearest inch. Values are subject to change without notice.



Chassis Requirements:

Minimum GVWR	64,000 lbs	64,000 lbs
Minimum Cab to Tandem / Cab to Drive Tandem (clear)	165"	176"
Minimum Frame RBM (each rail)	2,250,000 in-lbs	2,250,000 in-lbs
Minimum Front GAWR	18,000 lbs	18,000 lbs
Minimum Rear GAWR	46,000 lbs	46,000 lbs
Maximum Unloaded Frame Height	42"	42"
Minimum Frame Length Behind Rearmost Axle	40"	40"

Tandem Axle

Minimum GVWR	64,000 lbs
Minimum Cab to Tandem / Cab to Drive Tandem (clear)	165"
Minimum Frame RBM (each rail)	2,250,000 in-lbs
Minimum Front GAWR	18,000 lbs
Minimum Rear GAWR	46,000 lbs
Maximum Unloaded Frame Height	42"
Minimum Frame Length Behind Rearmost Axle	40"

Tri Axle

Minimum GVWR	64,000 lbs
Minimum Cab to Tandem / Cab to Drive Tandem (clear)	176"
Minimum Frame RBM (each rail)	2,250,000 in-lbs
Minimum Front GAWR	18,000 lbs
Minimum Rear GAWR	46,000 lbs
Maximum Unloaded Frame Height	42"
Minimum Frame Length Behind Rearmost Axle	40"

STANDARD EQUIPMENT

FEATURES

HDL 700/480 35-Ton - IND

Wrecker Boom	Wrecker Boom Lifting Rating @ 30°	Retracted	70,000 lbs
		Extended	22,000 lbs
	Boom Reach Off Rear of Tailboard (boom @ minimum working angle)		131"
	Boom Maximum Working Angle		38°
	Boom Minimum Working Angle		3.5°
	Boom Working Height to Hook (boom @ maximum working angle)		241"
	Boom Maximum Height (boom @ maximum working angle)		273"
	Wire Rope / Cable Boom Paint Protectors		X
	Wire Rope / Cable Tie Backs		X
Underlift	Underlift Type		Three Stage - Independent
	Power Tilt & Fold	Positive	12°
		Negative	19°
	Hydraulic Extension		79°
	Underlift Lifting / Towing Rating with Forks	Retracted	48,000 lbs / 80,000 lbs
		Extended	17,000 lbs / 80,000 lbs
	Reach with Forks (rear of tailboard to centerline of forks)	Retracted	72"
		Extended	142"
	Maximum Horizontal Towing Height with Forks		38"
	Underlift Tools		five (5) sets
	Spring Lift Attachments		one (1) set
	Alloy Safety Chains with Storage Pockets		X
Alloy Tie-Down Chains		X	
Dual Winch	Winch Capacity / Type (each winch)		25,000 lb / Planetary
	Air Cable Tensioner		X
	Air Shift Free Spool		X
	Cable Size / Length - 6 x 37 EIP IWRC Construction		5/8" dia / 200'
Lighting	FMVSS 108 Light Group Utilizing Weather Resistant Harnesses and Connectors		X
	Tool Compartment Lighting		X
	Control Station Lighting		X
	Aerodynamic Light Pylon with Pair of Winch Lights		X
	Lower Hookup Lights (pair)		X
	9 Function Switch Panel		X
Rear Spades	Hydraulically Controlled Rear Spades with Integral Recovery Anchors		X
Hydraulic System	Hydraulic Valve with Variable Flow Control		X
	System Pressure		3,000 psi
	Hydraulic Reservoir with Sight Gauge, Fluid Cut-Offs and Magnetic Clean-Out Provisions		X
	Two 10 Micron In-Line Return Filters with Pressure Gauges		X
	Direct Mount Tandem Gear Pump and Air Shift PTO with Engagement Indicator Light		X
	Dual Hydraulic Pressure Gauges (passenger side)		X
	Chrome Plated Cylinder Rods		X
	System Overload Protection		X
Controls	Passenger Side Fully Proportional Manual Hydraulic Controls		X
	Remote Pendant Plug-In Control for All Underlift Functions (non-proportional)		X
	Passenger Side Plug-In Provision for Remote Control		X
Modular Composite Body	159" Main Body - 1.65" CT		X
	Main Body Compartments		two horizontal - four vertical
	Aluminum Sub-Structure with Composite Panels		X
	Independently Rubber Shock Mounted Body		X
	Built-In Tool Storage and Chain Racks		X
	Stainless Steel Paddle Latches		X
	Gas Spring Door Assist		X
Centerline of Rear Tandem to Rear of Tailboard		66"	
Paint	Prime Finish		X
Miscellaneous	Mud Flaps		X
	Recovery Anchors		8 each side
	Recessed 7-Way Electrical Connector		X
	Recessed Glad Hand Connector		X
	Back-Up Alarm		X

OPTIONAL EQUIPMENT

FEATURES

HDL 700/480 35-Ton - IND

Underlift	Underlift Lifting / Towing Capacity with Coach Underlift	Retracted	48,000 lbs / 80,000 lbs
		Extended	17,600 lbs / 80,000 lbs
	Hydraulic Extension		94"
	Reach with Coach Underlift (rear of tailboard to centerline of forks)	Retracted	87"
		Extended	181"
	Maximum Horizontal Towing Height with Coach Underlift		38"
	Underlift Lifting / Towing Rating with Heavy-Duty Tire Lift	Retracted	14,000 lbs / 42,000 lbs
		Extended	14,000 lbs / 42,000 lbs
	Hydraulic Extension (with standard underlift / with coach underlift)		70" / 94"
	Reach with Heavy-Duty Tire Lift (rear of tailboard to centerline of tire lift) (with standard underlift / with coach underlift)	Retracted	67" / 83"
	Extended	137" / 177"	
Maximum Horizontal Towing Height with Heavy-Duty Tire Lift (with standard underlift / with coach underlift)		31" / 31"	
Winch	Dual 35,000 lb Planetary Winches with 5/8" Dia x 250' Cable		X
	Dual 35,000 lb Planetary Winches with 3/4" Dia x 200' Cable		X
	Underlift Drag Winch with 5/8" Dia x 250' Cable		X
	Underlift Drag Winch with 3/4" Dia x 200' Cable		X
	Swivel Hook for Winch Cable		X
	Winch Mirrors - 8" convex (pair)		X
Lighting	High Visibility Lightbar with Stop, Tail & Turn Signals		X
	Wing Lightbar - 21" Halogen (pair)		X
	Wing Lightbar - 21" Strobe (pair)		X
	Mini-Lightbar Mounting Wings (pair)		X
	Under Body Light Kit		X
	Forward Mounted Aerodynamic Light Pylon		X
	Deluxe Lower Hook-Up Lights (pair)		X
	Upper Hook-Up Lights (pair)		X
	Deluxe Upper Hook-Up Lights (pair)		X
	Upper Work Lights (pair)		X
	Deluxe Upper Work Lights (pair)		X
	Upper Work Lights - Wing Mounted (pair)		X
	Deluxe Upper Work Lights - Wing Mounted (pair)		X
	Extend-A-Light (2 lights)		X
	Strobe Light Package - Tail Lights (pair)		X
	Strobe Light Package - Pylon Amber Lights (pair)		X
	Strobe Light Package - Tail / Pylon Lights (pair)		X
Controls	Driver Side Plug-In for Remote Control		X
	Driver Side Fully Proportional Manual Hydraulic Controls (In addition to std passenger side)		X
	14 Function Non-Proportional Pocket-V Wireless Remote Control		X
	18 Function Nano-L Wireless Remote Control with Proportional Wrecker Boom Controls (Non-Proportional Underlift Controls)		X
	In-Cab Non-Proportional Underlift Controls		X
Modular Composite Body	24" Tunnel Toolbox		X
	24", 3/4 Height Tunnel Toolbox		X
	24" Stand Alone Toolbox		X
	24", 3/4 Height Stand Alone Toolbox		X
	49" Crossover Tool Compartment		X
	49" Crossover Tool Compartment with Pullout Drawer		X
	49" Stand Alone Tool Compartment		X
	49" Tunnel Toolbox for Forward Mounted Light Pylon		X
	49" Tunnel Toolbox for Counterweights		X
	49" Tool Compartment Tray		X
49" Crossover Tool Compartment with Inside Pullout Drawer (RH, LH or Both)		X	
Towing	1 7/8", 2", 2 5/16" or 50 mm dia Bolt-On Ball Adapter - 5,000 lb Tow Capacity		X
	Pintle Hook with 2" or 50 mm dia Ball - 3,000 lb Lift / 16,000 lb (hook), 7,000 lb (ball) Tow Capacity		X
	Fifth Wheel Attachment		X
	Small Tie-Down Straps for Heavy-Duty Tire Lift (pair)		X
Paint	Custom Paint Colors Available		X
Miscellaneous	Snatch Block - 12 Ton, 8" Sheave		X
	Snatch Block - 12 Ton, 10" Sheave		X
	Frame Stretch / Frame Modification		X
	ABS Brake Wire / Cables		X
	Inversion Valve Kit		X
	R12 Relay Valve		X
	On Board Truck Scales		X
	Video Camera Kit		X
	Hydraulic Generator Kit		X
	Counterweights		X
	Custom Stainless Steel Tailplates		X